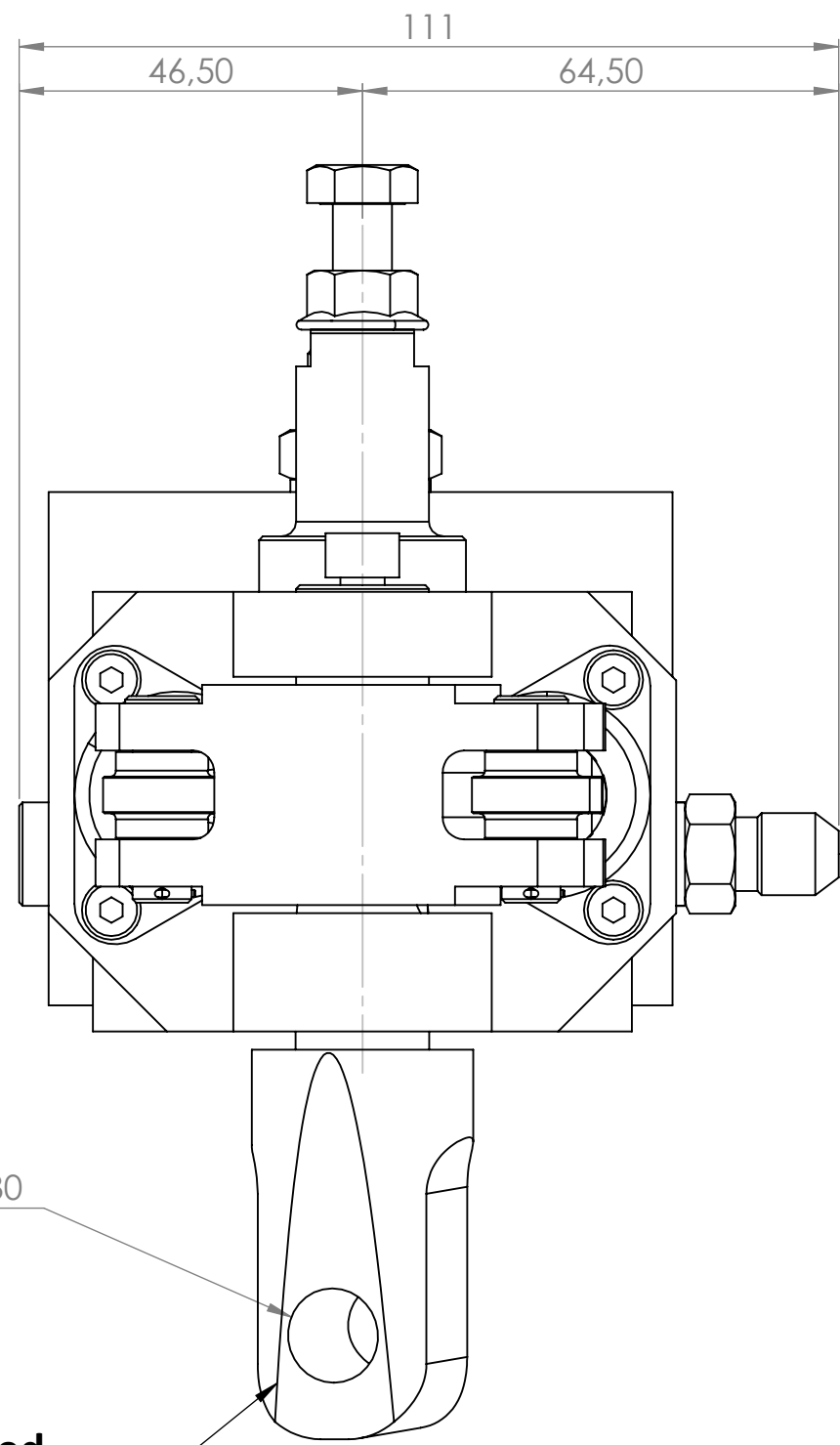
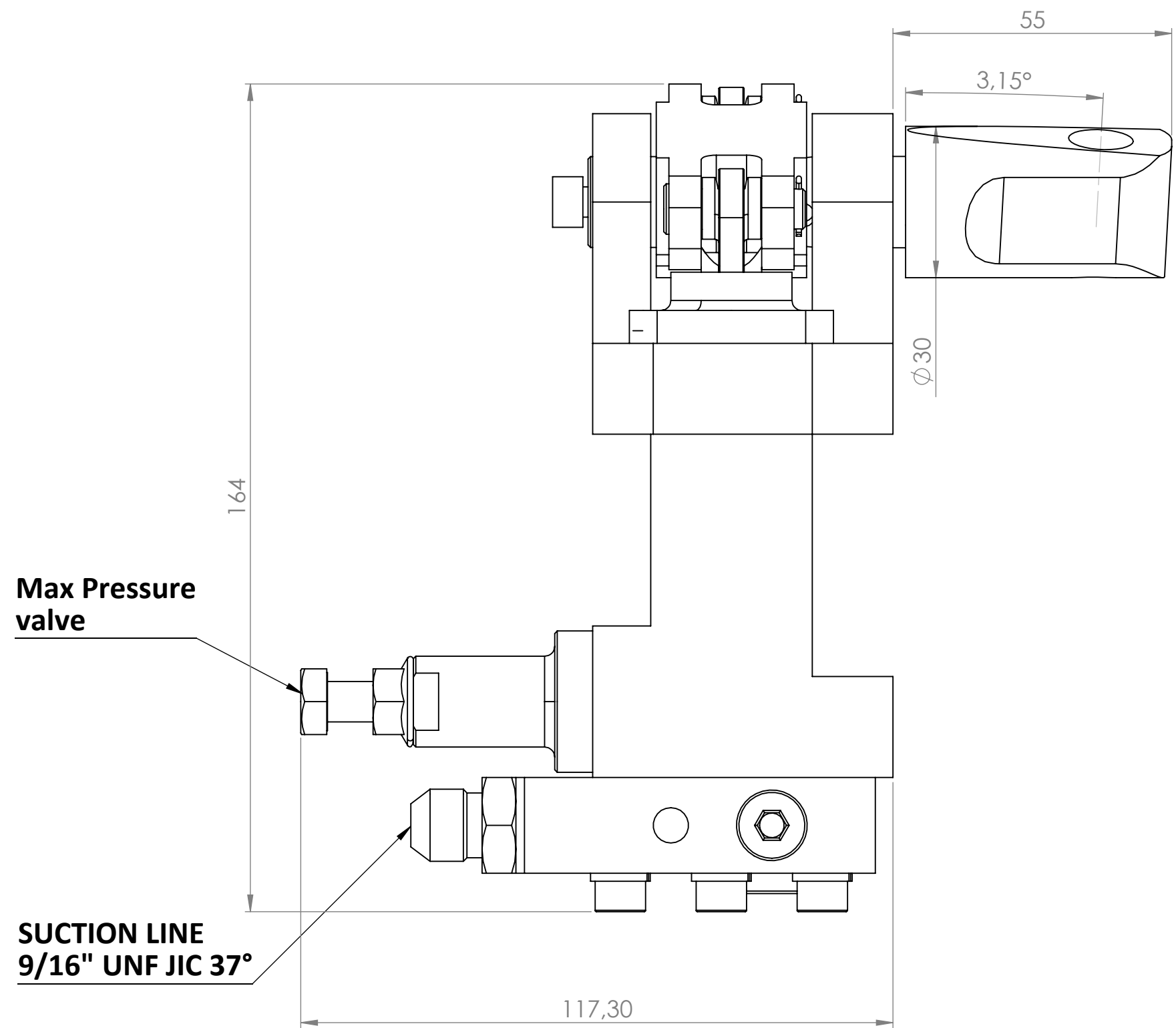
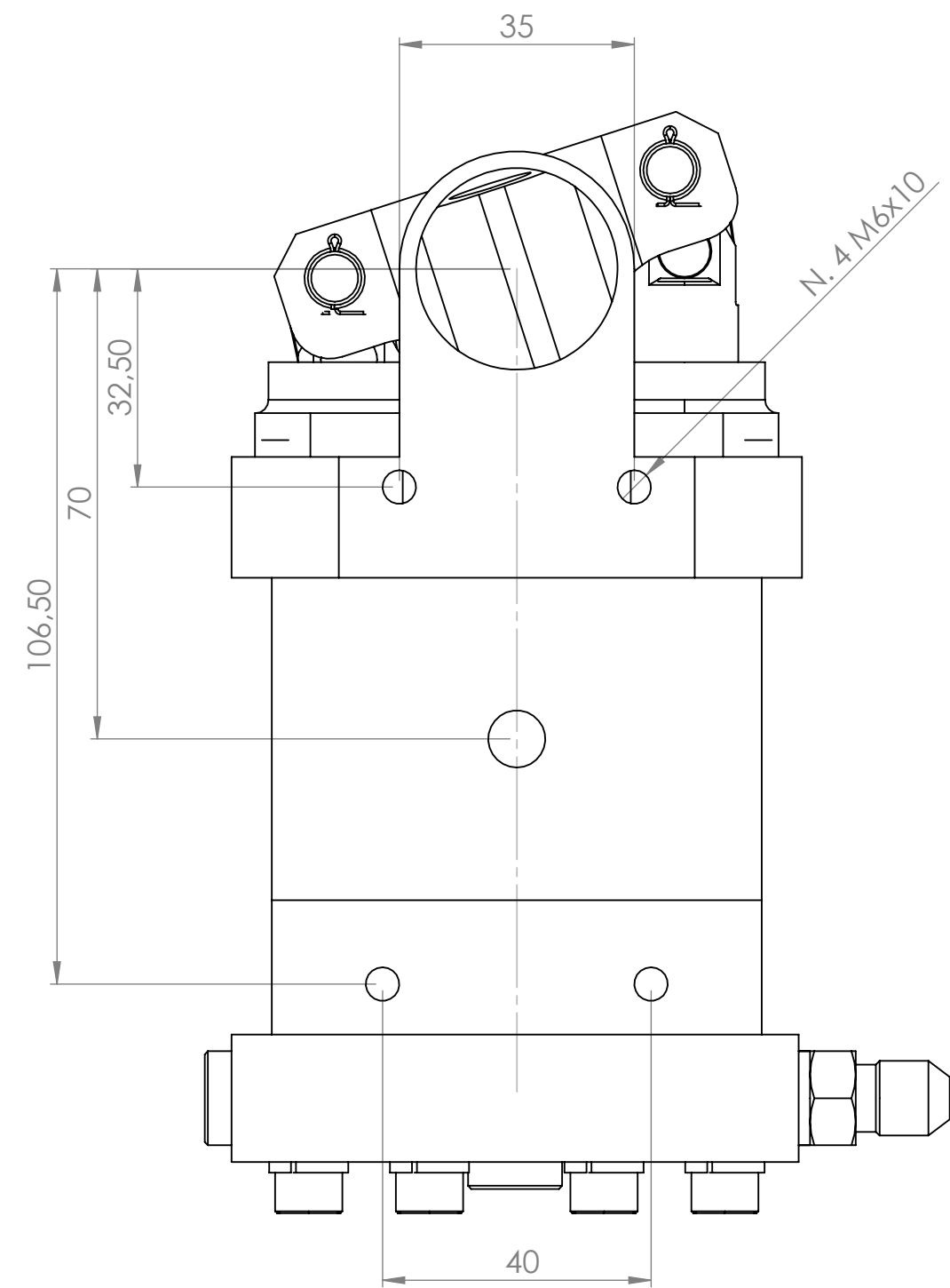
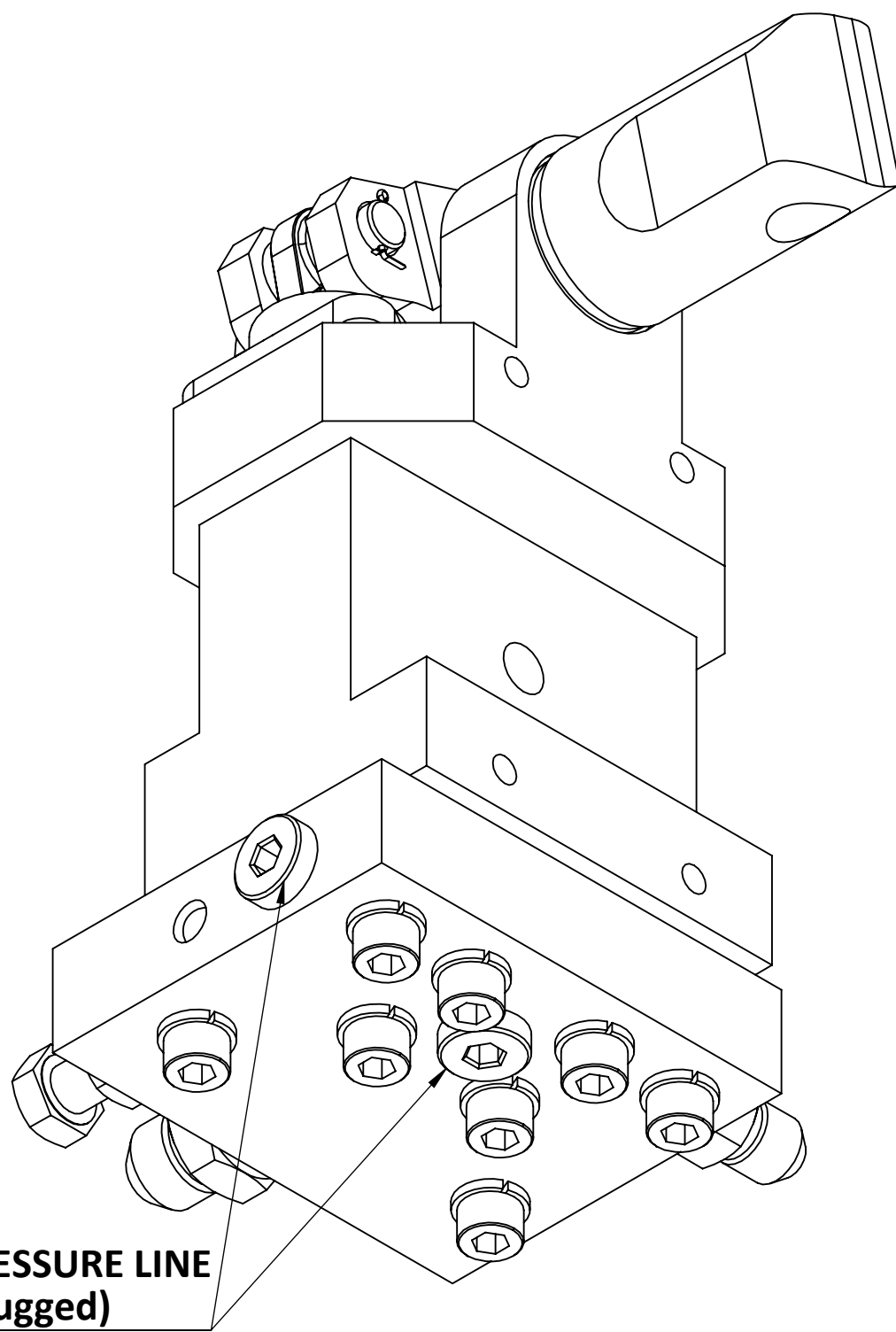


Pressure Line
Thread for eventual gauge

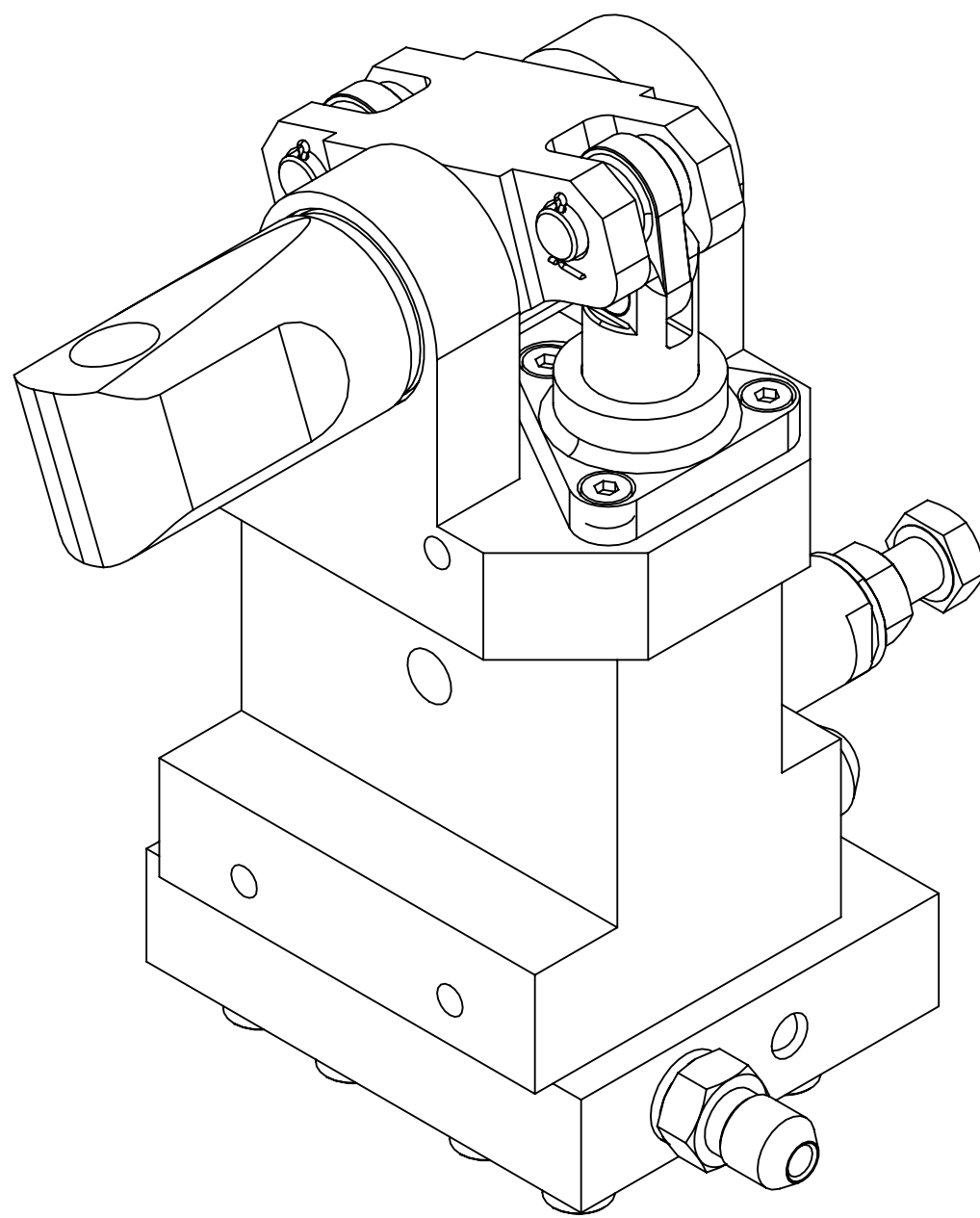
PRESSURE LINE
7/16" UNF JIC 37°



Handle side.
The shaft can be installed
180° rotated, to arrange
the pump in the best way



PRESSURE LINE
(plugged)



IPA 0416 - QUAD LINE
Single speed alternate pump
Integrated max pressure valve
Displacement: 3.6 cc
Max Pressure: 700 bar
Approx. dry weight (only pump): 1.750 kg
Approx. dry weight of the manifold for fittings: 0.165 kg

REV.	DATA / DATE	DESCRIZIONE / DESCRIPTION	NOME / NAME
RIFERIMENTO / REFERENCE			TABLE SIZE A1
TRAT. TERMICO / HEAT TREAT.		TRAT. SUPERFICIALE / FINISH	
CONTROLLATO / CHECKED	DATA / DATE	MATERIALE / MATERIAL	
AC	21-05-2018		
APPROVATO / APPROVED	DATA / DATE	SCALA / SCALE	PESO / WEIGHT kg
		1:1 @ A1	
DISEGNO N. / DRAWING		REV.	
		IPA 0416 -	
DESCRIZIONE / DESCRIPTION			
ALTERNATE PUMP - QUAD LINE - SINGLE SPEED			

CARIBONI S.r.l.
Via Mattei 3/A
20885 Ronco Briantino
e-mail: info@cariboni-italy.it
www.cariboni-italy.com

CARIBONI

Tel +39 039 6079609
fax +39 039 6079128

ATTENTION! THIS DOCUMENT AND THE INFORMATION IT CONTAINS SHALL NOT BE REPRODUCED NOR DISCLOSED TO ANYBODY, BECAUSE PROPERTY OF CARIBONI S.r.l.